

Phone Accessibility

One of the nice things about smart phones and computers is that you can change the settings to meet your needs, and almost all device have accessibility settings baked into the operating systems.

In every device I have used, accessibility is available under device settings.

iOS Settings

On an Apple device, the settings icon is usually located on the Dock.



Look for the gear icon like the one on the right to access your settings.

Android Settings

On Android device, the settings icon is always available from the Quick Settings, which appears when you drag your finger from the top of the screen. It is also available in the App drawer, which appears when you swipe on your screen.



Look for a gear icon like the one on the right.

Accessibility Settings

Both Android and iOS devices should have Accessibility available from the main settings menu.



Open your device settings. Scroll down until you see Accessibility.

Visibility Enhancements

Visibility enhancements include things like font size, font style, contrast, brightness, and screen zoom.

Hearing Enhancements

These include things like transcription and caption / voice over and spoken content, and hearing aid support

Screen Reader

This provides audio guidance for navigating your device.

Touch Accommodations

These allow you to change hold duration, repeated touches, and similar touch-based interactions.

Flash Alerts

Flash alerts allow you to use the camera flash to notify you of incoming calls and texts.

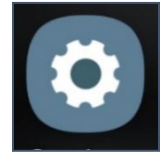
Lock Screen

You can change how quickly the screen locks if you are not interacting with it. It is important to allow the device to lock when not in use, but a longer time-out is useful, especially if you're movements are slower than they used to be.

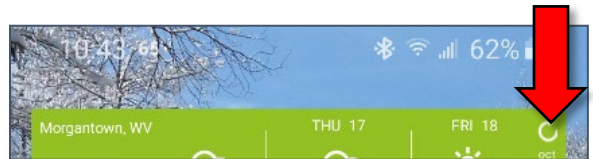
Android

Android Settings

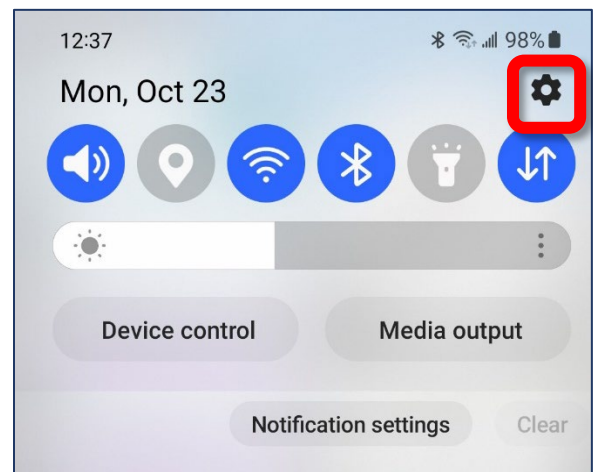
Most of the things you might want to change or personalize will be accessed from Settings. You can access your settings from quick settings, from an icon on your home screen (if you have one there—many people don't) or from your App Drawer. Once you have your settings open, you can scroll through the various menus or search from the Search / Finder box.



1. Drag your finger down from the top of the screen. It helps to start a little bit above the active screen.



2. Your **Quick Settings** will appear. This has toggles for commonly used services, such as wireless, Bluetooth, and Volume. It should also have a gear icon which is your settings icon. Tap on the gear icon to open your device settings.



Android Accessibility

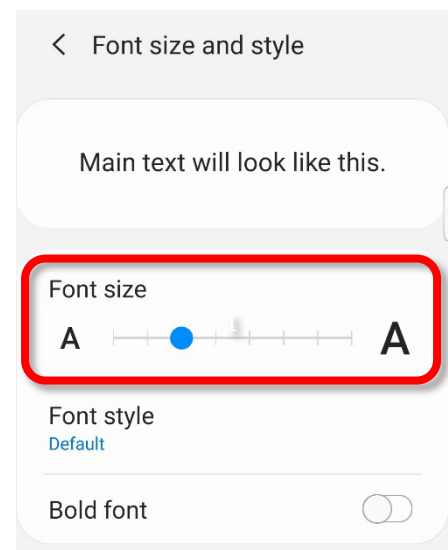
.There are many different things you can do to make your device easier to use. Many of these options are located in your Settings under **Accessibility**.

Display

One of the easiest things to change on your device is to change the font size. This makes all the text larger.

Font Size

1. Open your **Settings**.
2. Search for **font**.
3. Select **Font size and style**.
4. Use the slider to make the text larger as needed.



Hearing Enhancements

1. Open your **settings**.
2. Select **Accessibility**.
3. Scroll to **Hearing enhancements**.

Hearing Aid Support

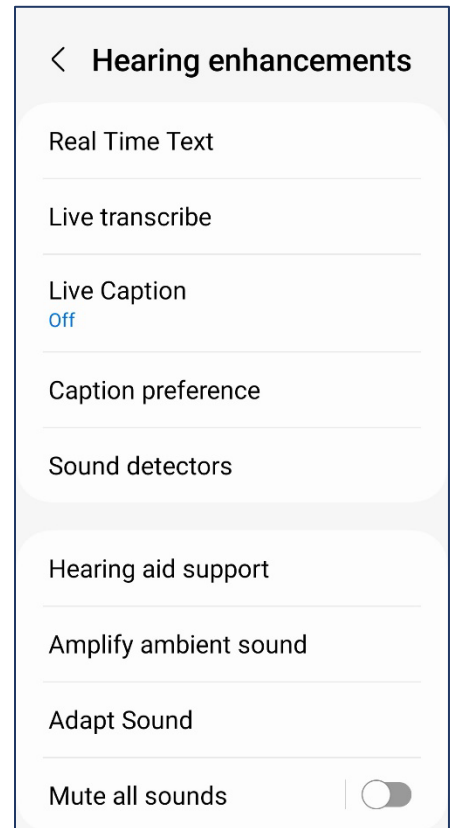
Your audiologist should be able to help you connect your hearing aids to your phone.

Live Caption

Captions speech that comes from your devices, like videos and podcasts.

Live Transcribe

Captures speech and sound and sends them to your screen as text.



Visibility Enhancements

1. Open your **settings**.
2. Select **Accessibility**.
3. Scroll to **Visibility enhancements**.

Remove animations

Reduces automatic movement in apps and settings.

Reduce transparency

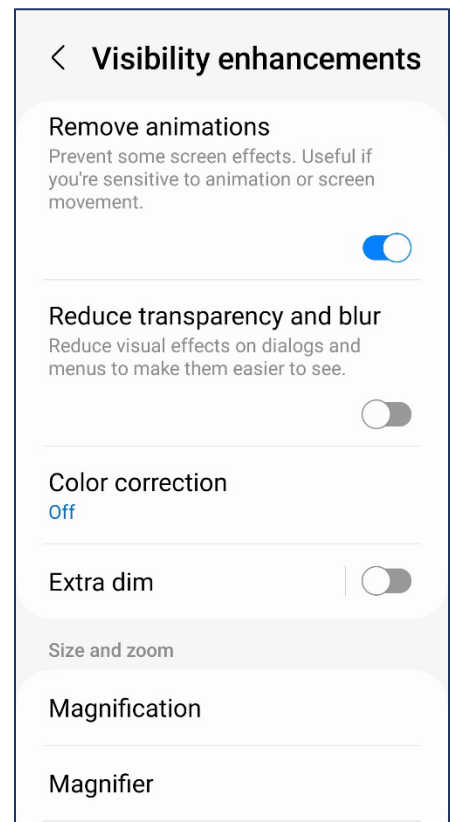
Removes transparency to increase contrast.

Magnification

Temporarily zoom your screen.

Magnifier

View real world objects, larger.



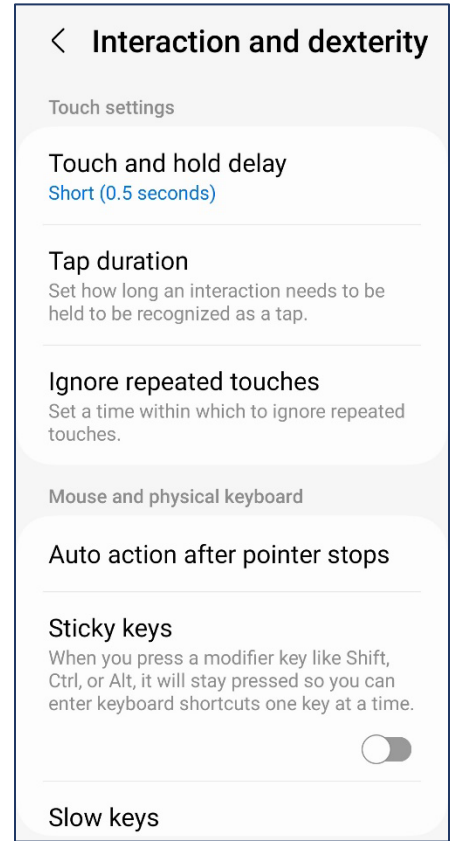
Interaction and Dexterity

Interaction and dexterity provides modifications for those with touch related issues like tremor and mobility.

1. Open your **settings**.
2. Select **Accessibility**.
3. Scroll to **Interaction and dexterity**.

Answering and Ending Calls

Your phone can read caller names aloud, when those names are available.



Lock Screens and Security

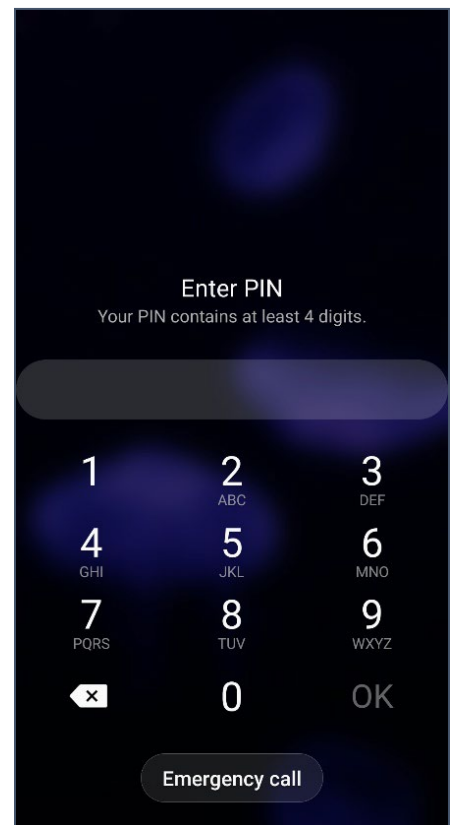
Your screen should automatically lock when you walk away from your phone. You have the option of a setting a Pattern, a PIN, or a Password. I recommend using a PIN (Personal Identification Number) because it's more secure than a pattern, but easier to type than a password. (The keyboard for a PIN is larger.)

You can also set up biometrics, and use your fingerprint or face or iris to login.

From your lock screen, you have the ability to make an emergency call.

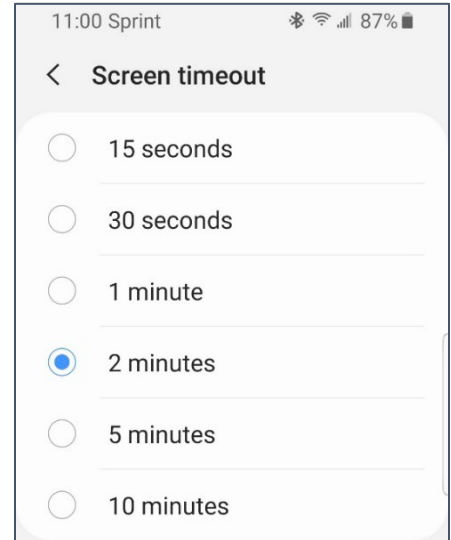
Turning On Your Lock Screen

1. Open your Settings. (See page 3)
2. Tap Lock screen.
3. Tap Screen lock type.
4. Select the type of screen lock (I recommend PIN).
5. Set your PIN. I recommend using at least 6 digits.
6. Immediately make note of your PIN in a safe place.



Changing Your Screen Timeout

1. Open your Settings. (See page **Error! Bookmark not defined.**)
2. Search for **Screen timeout**.
3. Select **Screen timeout**.
4. Lengthen the time before your screen timeout occurs.

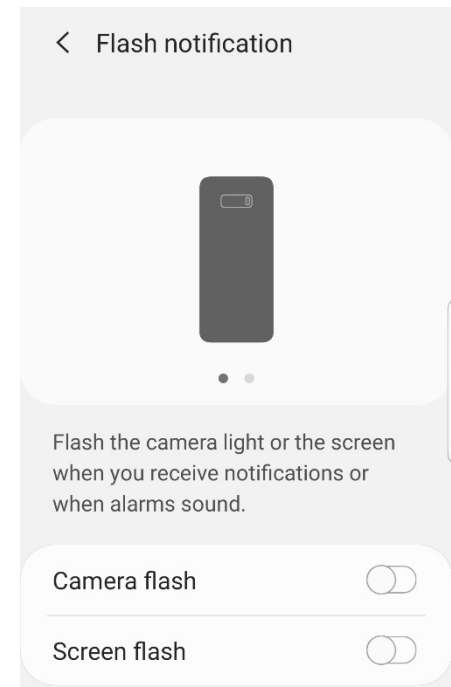


Flash Alerts

Flash alerts cause your camera or screen to flash when you receive a notification.

Toggling Flash Alerts

1. Open your **Settings**.
2. Search for **flash**.
3. Select **Flash notification**.
4. Select Camera flash or Screen flash as desired.



iOS

iOS Settings

Changing the behavior of your device is done in **Settings**.

If you have an iPad, settings is divided into two panes. The left pane displays the available options, and the pane gives you further details for the option you selected, as well as various toggles for these options. If you have an iPhone or device with a smaller screen, there is only a single pane that changes with each selection.



iOS allows you to toggle various options to make the device easier to use when you have vision issues.

Brightness

1. Open **Settings**.
2. Scroll down until you find **Display & Brightness**.
3. At the top, adjust the slider to the right to make the screen brighter.

Text Size

1. Open **Settings**.
2. Scroll down until you find **Display & Brightness**.
3. Tap **Text Size**.
4. Tap the slider until you find the desired text size.

Voice Control

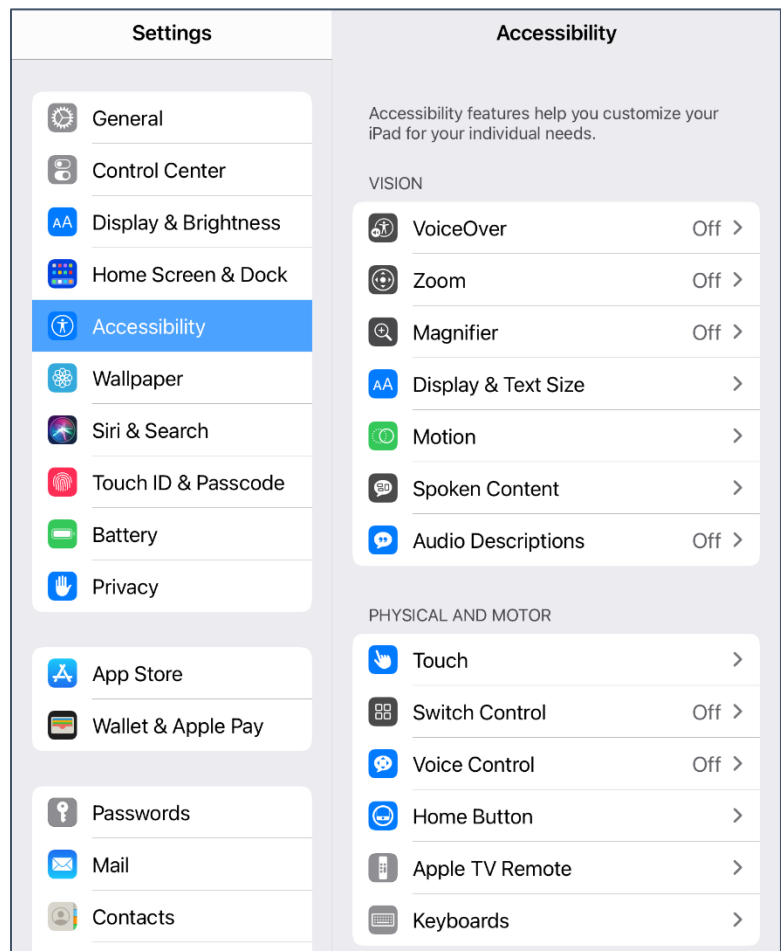
Voice Control allows you to manipulate your digital device using your voice rather than using touch.

Subtitles & Captioning

These allow you to read device text, when available.

Turning on Flash Alerts (iPhone Only)

1. Open **Settings**.
2. Tap **General**.
3. Tap **Accessibility**.
4. Under **Hearing**, toggle on **LED Flash for Alerts**.



Display & Text Size

1. Open **Settings**.
2. Scroll down and tap **Accessibility**.
3. Select **Display & Text Size**.

Contrast

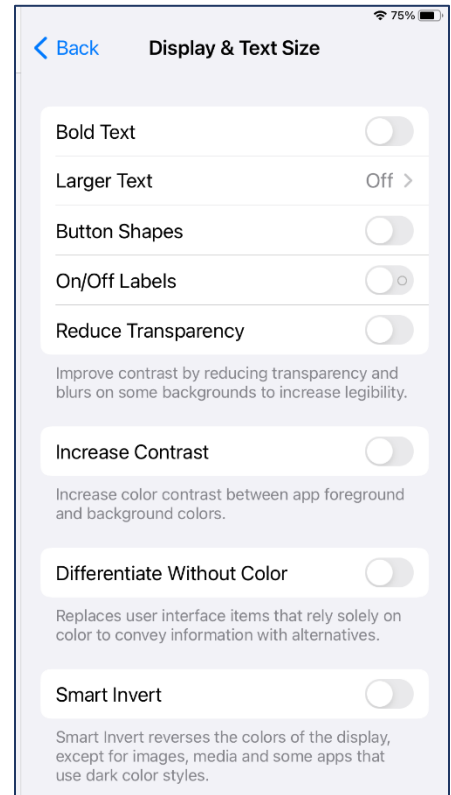
Increases the contrast between text and background.

Reduce Transparency

Increases the contrast of text.

Bold Text

Makes device text bold.

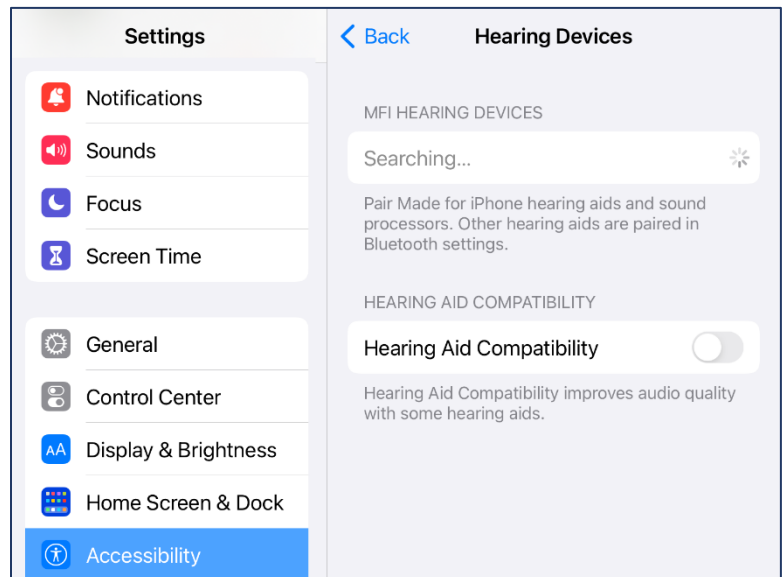


Hearing Devices

You can link Bluetooth hearing aids to your mobile devices.

Your audiologist should be able to help sync your hearing aids with your iOS device.

1. Open **Settings**.
2. Tap **General**.
3. Tap **Accessibility**.
4. Tap **Hearing Devices**.



Touch

1. Open **Settings**.
2. Scroll down and tap **Accessibility**.
3. Scroll down to the Interaction section and tap **Touch**.

Haptic Touch

How the screen vibrates as you touch it.

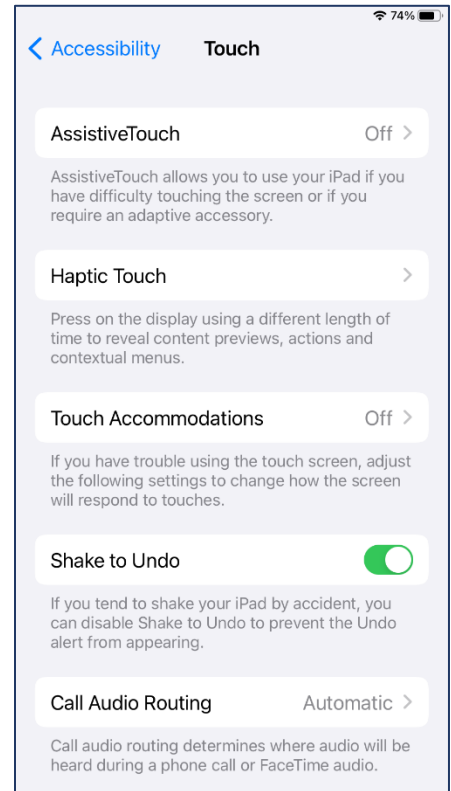
Touch Accommodations.

Hold Duration

Allows the device to ignore accidental taps; you must touch the screen for a set duration before a touch is recognized.

Ignore Repeat

Allows the device to ignore accidental multiple taps.



Screen Timeout / Lock

Auto-Lock is how quickly your device returns to the [lock screen](#) after being ignored. If this time is too short, it will lock while you're in the middle of reading something, but if the time is too long, someone could have access to all the information on your device if you accidentally walk away and leave it on.

Changing the Auto-Lockout

1. Open **Settings**.
2. Select **Display & Brightness**.
3. Tap **Auto-Lock**.
4. Set the desired time. Do NOT choose **Never**. If you choose a longer time period, get in the habit of closing your device with the power key when you are done using it.

